

Table of Contents

Four Corners

Team 1

Ucheya Ajaero
Abigail Bullock
Abigail Perkins
Nichelle Rahming-Williams
6f]UbbU 'F]ZŶ

Team 2

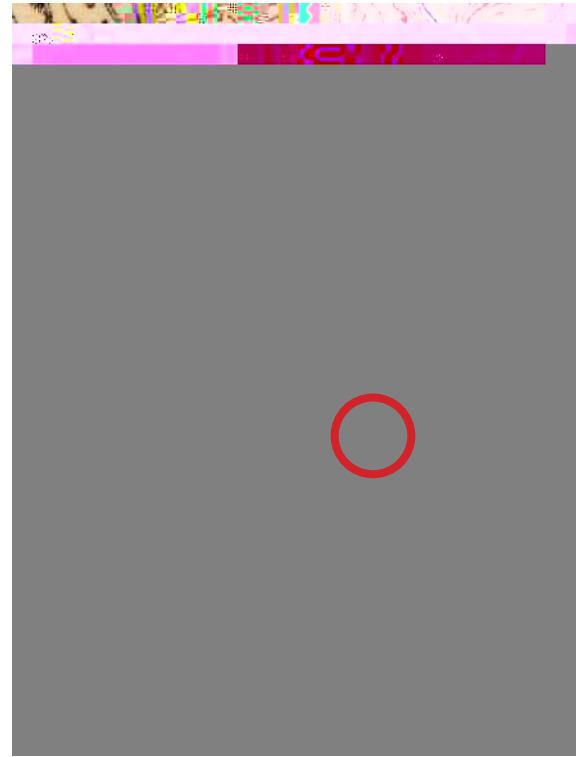
ylin Garcia

Four Corners

Montgomery County, MD



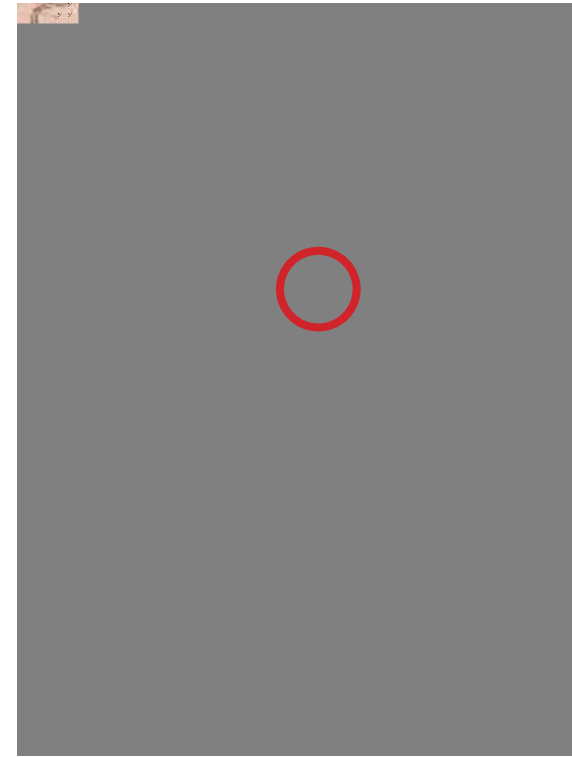
FOUR CORNERS INTERSECTION 1908



FOUR CORNERS INTERSECTION 1923



FOUR CORNERS INTERSECTION 1944



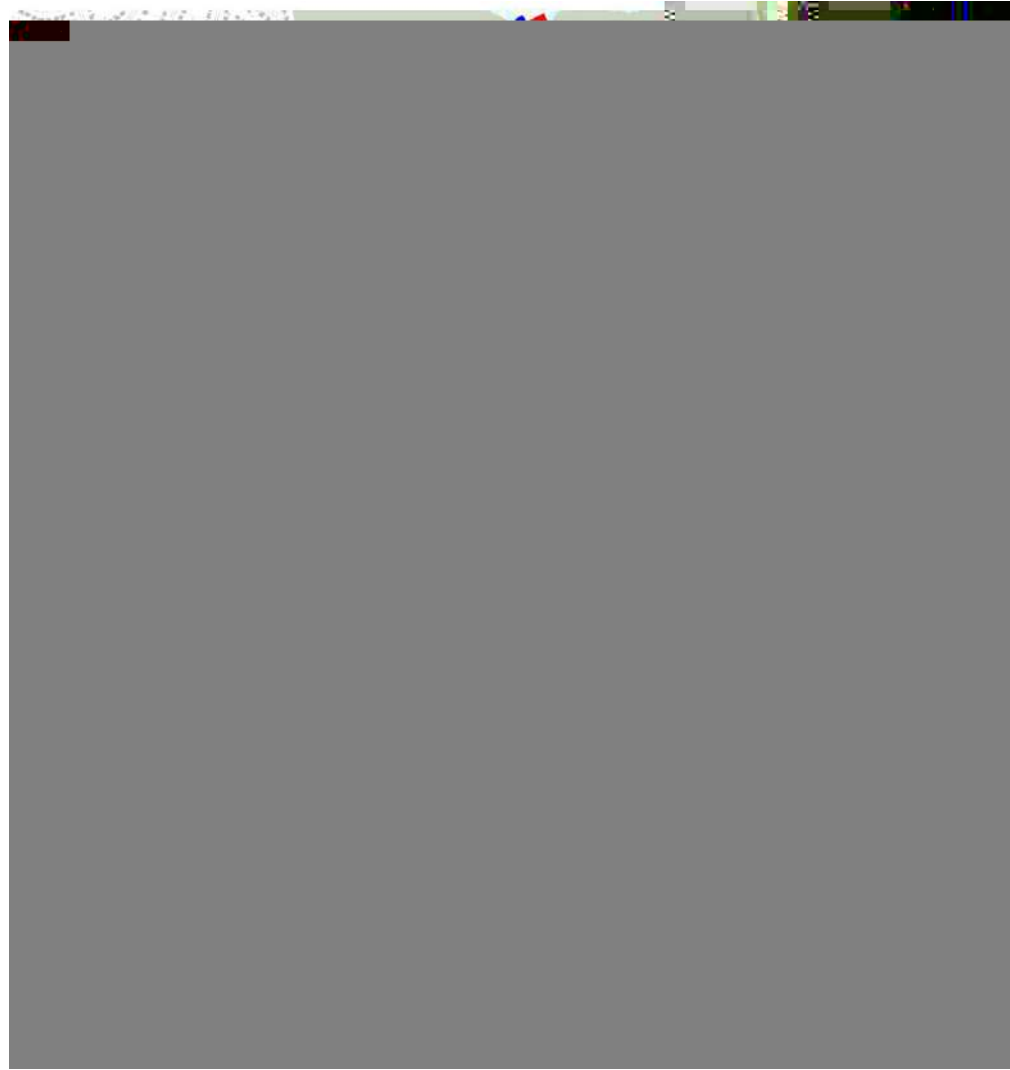
FOUR CORNERS INTERSECTION 1965



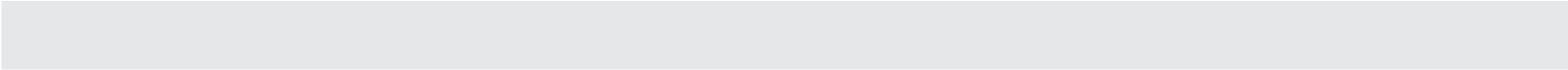
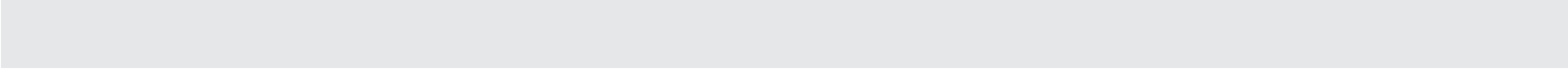
FOUR CORNERS INTERSECTION 1970

Four Corners over the Years

Four Corners began with the establishment in the 1700s of a water mill located at the easternmost corner of Four Corners, creating an opportunity for agricultural development. The community remained rural until the post-World War I building boom, quickly becoming one of the region's many "bedroom communities" along with the neighborhoods of Northwood Park, Woodmoor, Indian Spring Village, Indian Spring Terrace, North Hills of Sligo Park, and Fairway. The mass development of single-family homes was accompanied by winding leafy streets in contrast to an urban grid of older towns and cities in the region. As the overall region turned to suburban expansion and car ownership, the county widened Old Bladensburg Road and renamed it University Boulevard



BUS ANS



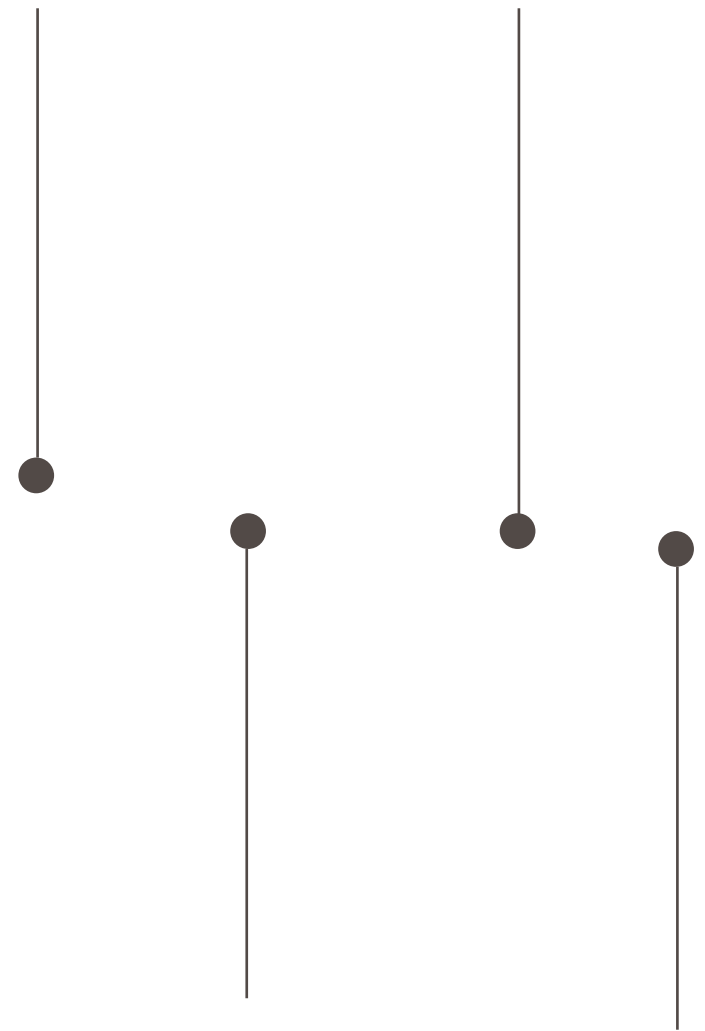
ADAPTED ROAD S



PROP











HYATTSVILLE SITE

